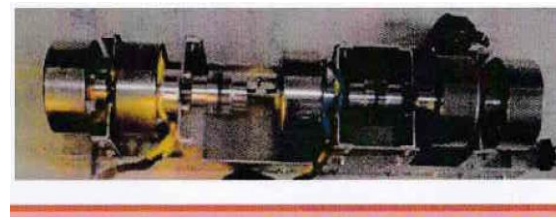
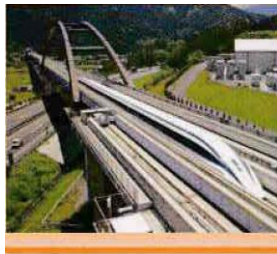


Endless Power Generator



The world's first free energy clean energy generator

-The epoch-making generator which came out of state-of-the-art of the linear Shinkansen



- There is not an engine at all and generates electricity only with a magnetic force motor
- Fuel is unnecessary and continues generating electricity without being lost power if I operate it once on a day. I continue generating electricity 365 days for 24 hours
- The discharge of CO2 is ultimate energy saving, a global environment contribution degree size for 0, an environmental problem in what do not use the fuel either

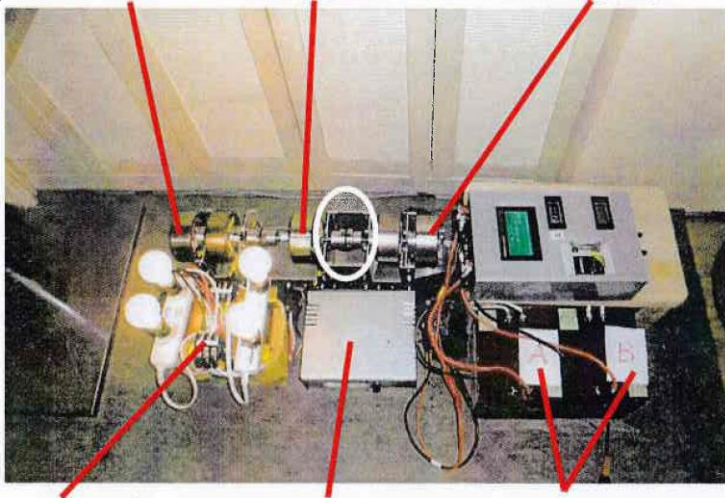


EPG Overview 5Kw & 50Kw

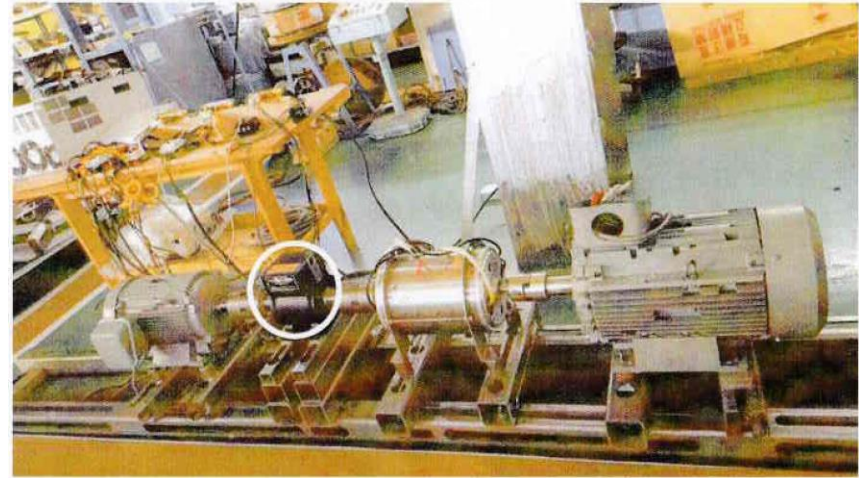
5Kw machine

start generation motor

Output generation motor



50Kw machine



Trans inverter 600w

selector circuit

battery (12v 15A)

-- Structure of the generation

- ① I turn a start motor in battery A (output 24V) and turn an input generation motor and an output generation motor.
- ② I charge battery B than an input generation motor via one time of selector road (base).
- ③ I produce electricity of the interchange through a transformer than an output generation motor.
- ④ When the voltage of battery A fell to 23V; by one time of selector road (base) battery A and battery battery B in second (automatic)

Change.

-- Characteristic of the generator

- ① It is a specification not to need fuel. Driving is possible for a long time.
- ② I can move it at the time of a blackout and the disaster of the emergency.
- ③ The weight is light, too, and carrying around is easy. (3KVA: 40kg in weight) (dimensions: 500mm in total length overall width 800mm overall height 450mm)
- ④ Because I do not use fuel, not to mention use in the outdoors, I can use it in the room.
- ⑤ In the winter, available in a use temperature range being from -20 degrees Celsius with superior low temperature performance (I cope to -2 degrees Celsius) in winter]
- ⑥ It becomes the environmental conservation [clean energy].

アイエスティー株式会社



Environmental Protection Company

Endless power Generator ANA Hotel Sumirashion

TOKYO ANA Hotel 2002 Hotel use area 98,000m²

Annual use electricity 20,549MWh

Endress Power Genarator Covers the total power capacity of one year with 94 units of 25 Kw. The electricity generation cost will be 4.95 yen / 1 Kw (when used for 30 years)

Annual electricity amount can be reduced from 400 million yen to 100 million yen (reduction rate 75%)

Quantity of electricity	One Year	One Month	One Day	One Our
	20,549,000	1,712,417	56,299	2,346
25Kw				94

Annual electricity price comparison	
1 kw electricity charge (before introduction) unit :Yen	20
Annual electricity charge unit:Yen	410,980,000
1 kw electricity charge (assumed for 30 years use) unit:Yen	4.95
Annual electricity charge unit:Yen	101,650,304
Reduction rate	75.27%

Electricity generation cost (1 Kw)					
Year of continuous use unit :Year	10	20	30	40	50
Continued use cost unit:Yen	27,500,000	30,000,000	32,500,000	35,000,000	37,500,000
1 KW power generation cost unit Yen	12.56	6.85	4.95	4.00	3.42



Reference material EPG 1 kW power generation cost

In the case of product sales model 1 KW 1 million yen 5 years maintenance 50,000 yen

Year of continuous use Unit: Year	5	10	20	30	40	50
Continuous power generation cost unit: yen	1,050,000	1,100,000	1,200,000	1,300,000	1,400,000	1,500,000
Continued Maintenance Cost Unit: yen	50,000	100,000	200,000	300,000	400,000	500,000
1 KWA power generation cost unit: yen	23.97	12.56	6.85	4.95	4.00	3.42

In case of power sale model

25 kW 10 million 5 years maintenance 25% of the product price

Year of continuous use Unit: Year	5	10	20	30	40	50
Continuous power generation cost unit: yen	12,500,000	15,000,000	20,000,000	25,000,000	30,000,000	35,000,000
Continued Maintenance Cost Unit: yen	2,500,000	5,000,000	10,000,000	15,000,000	20,000,000	25,000,000
1 KWA power generation cost unit: yen	11.42	6.85	4.57	3.81	3.42	3.20

